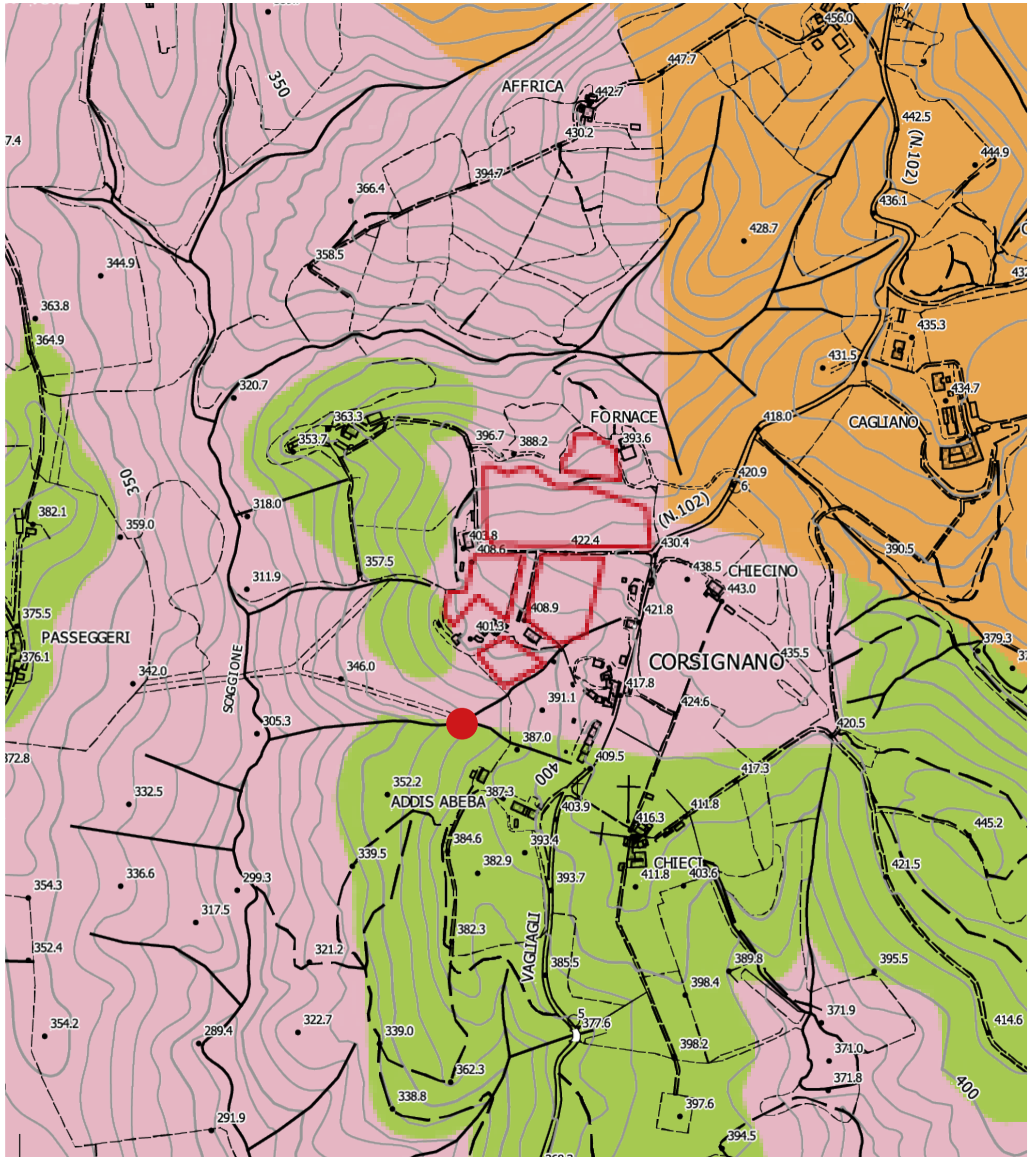


Fattoria di Corsignano

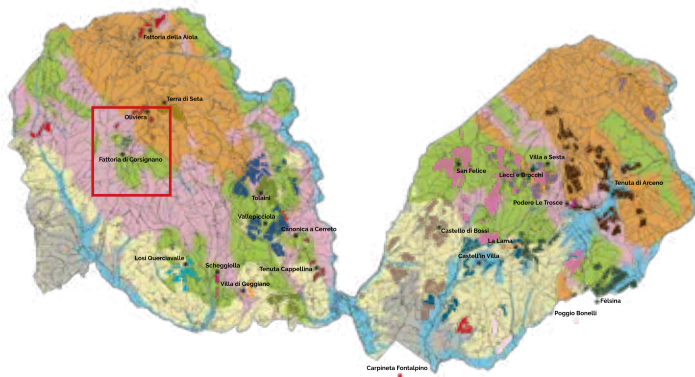


Legenda | Legend

Geologia | Geology

- Depositi sabbioso-ghiaiosi di origine alluvionale / Sandy deposits with gravel of Alluvium origins (loose silt, clay, sand, gravel)
- Depositi sabbiosi e conglomeratici neogenici / Sandy deposits and conglomerated sedimentary rock from Neogene period (typically sand, silt, clay, calcium carbonate matrix, well rounded gravel)
- Depositi argillosi neogenici / Clay deposits from the Neogene period (Clay from this period is supposed to have a lot of Minerals)
- Rocce prevalentemente arenacee / Rocks predominantly of sandstone
- Rocce prevalentemente calcaree / Rocks predominantly of limestone
- Rocce prevalentemente argillitiche / Rocks predominantly of Marlstone (Marl, sedimentary rock of clay and calcium carbonate from Permian period)

● Cantina | Winery



CLASSICO BERARDENGA
VITICOLTORI DI CASTELNUOVO

