

Legenda | Legend

Geologia | Geology

■ Depositi sabbioso-ghiaiosi di origine alluvionale / Sandy deposits with gravel of Alluvium origins (loose silt, clay, sand, gravel)

■ Depositi sabbiosi e conglomeratici neogenici / Sandy deposits and conglomerated sedimentary rock from Neogene period (typically sand, silt, clay, calcium carbonate matrix, well rounded gravel)

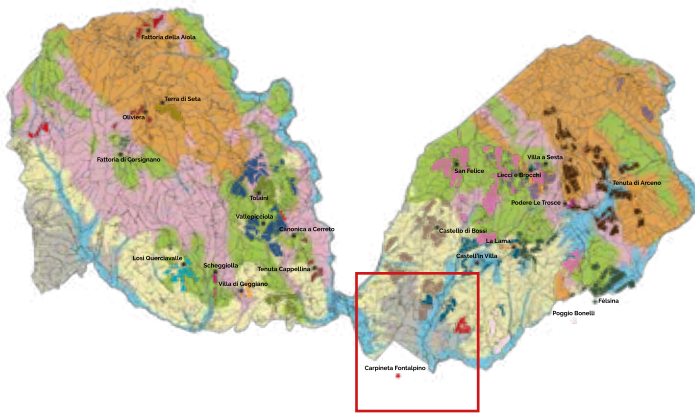
■ Depositi argillosi neogenici / Clay deposits from the Neogene period
(Clay from this period is supposed to have a lot of Minerals)

■ Rocce prevalentemente arenacee / Rocks predominantly of sandstone
■ Rocce prevalentemente calcaree / Rocks predominantly of limestone

■ Rocce prevalentemente calcaree / Rocks predominantly of limestone

■ Rocce prevalentemente argillitiche / Rocks predominantly of Marlstone (Marl, sedimentary rock of clay and calcium carbonate from Permian period)

- *Cantina | Winery*

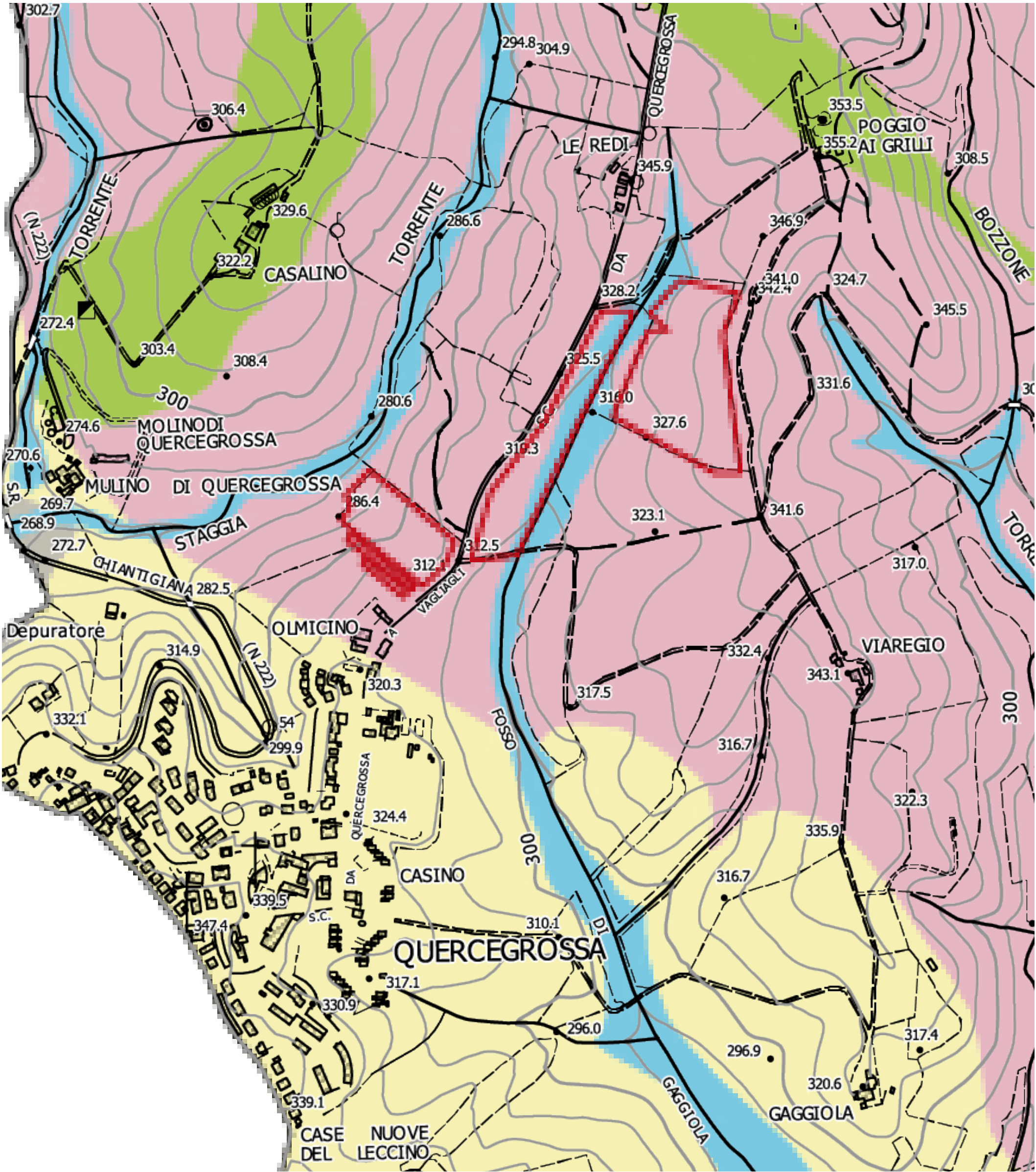


CLASSICO BERARDENGA
VITICOLTORI DI CASTELNUOVO

VITICOLTORI DI CASTELNUOVO



FATTORIA
CARPINETA FONTALPINO
Gioia e Filippo Cresti

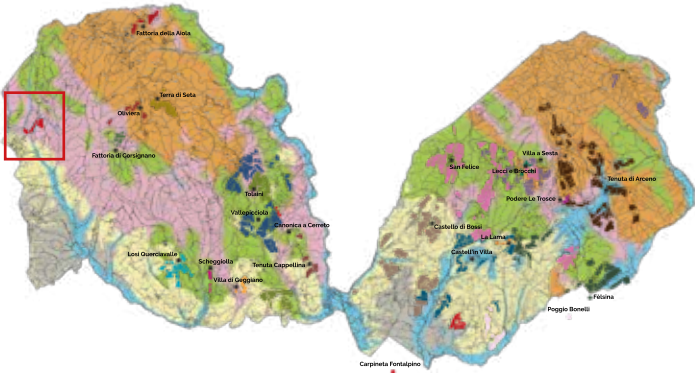


Legenda | Legend

Geologia | Geology

- Depositi sabbioso-ghiaiosi di origine alluvionale / Sandy deposits with gravel of Alluvium origins (loose silt, clay, sand, gravel)
- Depositi sabbiosi e conglomeratici neogenici / Sandy deposits and conglomerated sedimentary rock from Neogene period (typically sand, silt, clay, calcium carbonate matrix, well rounded gravel)
- Depositi argillosi neogenici / Clay deposits from the Neogene period (Clay from this period is supposed to have a lot of Minerals)
- Rocce prevalentemente arenacee / Rocks predominantly of sandstone
- Rocce prevalentemente calcaree / Rocks predominantly of limestone
- Rocce prevalentemente argillitiche / Rocks predominantly of Marlstone (Marl, sedimentary rock of clay and calcium carbonate from Permian period)

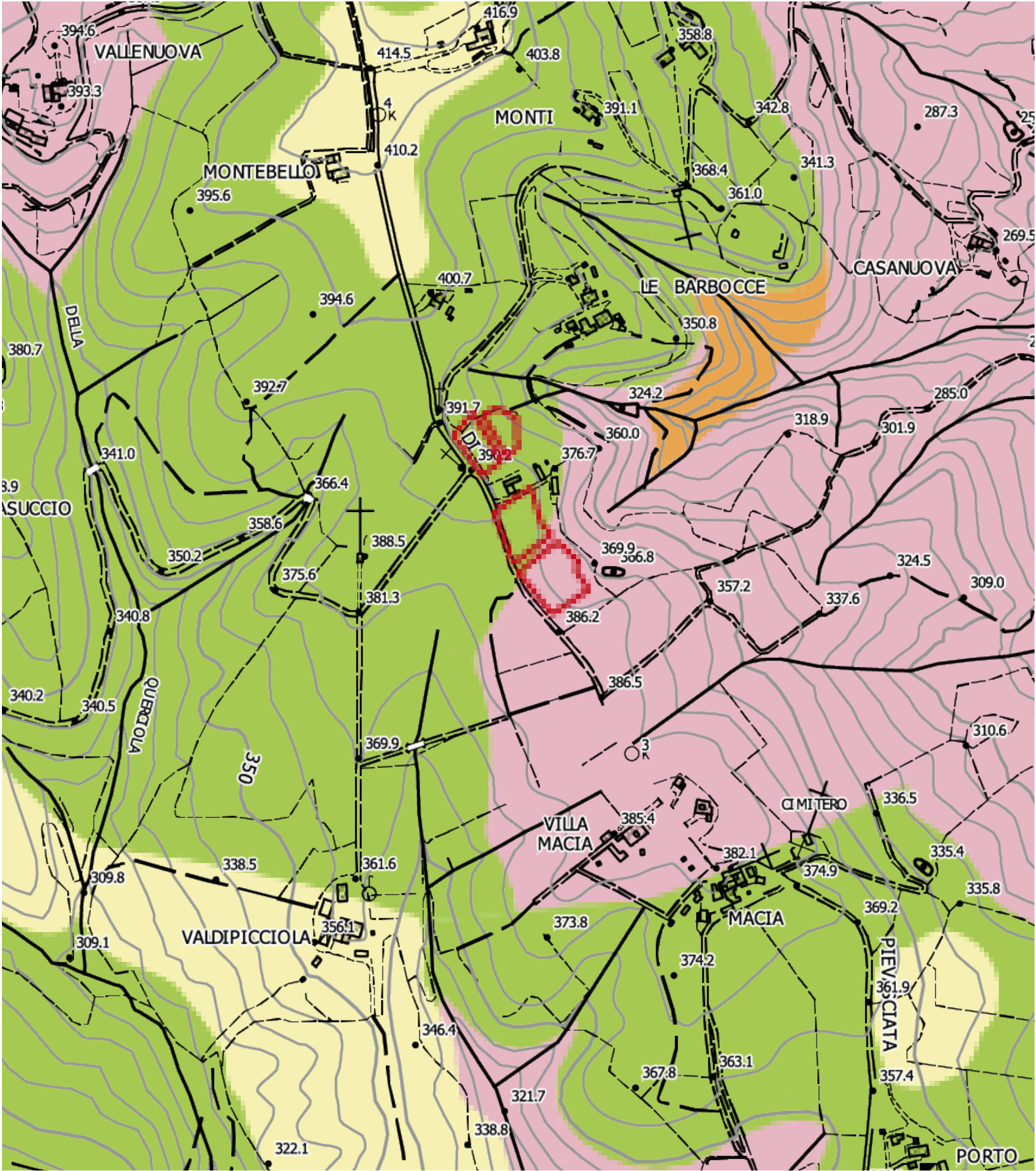
● Cantina | Winery



CLASSICO BERARDENGA

VITICOLTORI DI CASTELNUOVO

FATTORIA
CARPINETA FONTALPINO
Gioia e Filippo Cresti

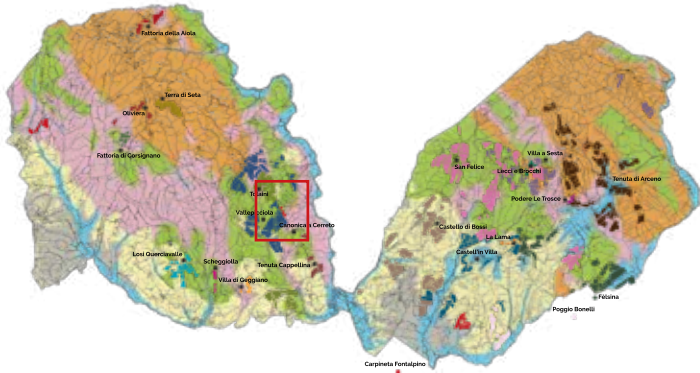


Legenda | Legend

Geologia | Geology

- Depositi sabbioso-ghiaiosi di origine alluvionale / Sandy deposits with gravel of Alluvium origins (loose silt, clay, sand, gravel)
- Depositi sabbiosi e conglomeratici neogenici / Sandy deposits and conglomerated sedimentary rock from Neogene period (typically sand, silt, clay, calcium carbonate matrix, well rounded gravel)
- Depositi argillosi neogenici / Clay deposits from the Neogene period (Clay from this period is supposed to have a lot of Minerals)
- Rocce prevalentemente arenacee / Rocks predominantly of sandstone
- Rocce prevalentemente calcaree / Rocks predominantly of limestone
- Rocce prevalentemente argillitiche / Rocks predominantly of Marlstone (Marl, sedimentary rock of clay and calcium carbonate from Permian period)

● Cantina | Winery



CLASSICO BERARDENGA
VITICOLTORI DI CASTELNUOVO



**FATTORIA
CARPINETA FONTALPINO**
Gioia e Filippo Cresti